



TURNING CANCER DATA
INTO DISCOVERY

Oropharynx Solid Tumor Rules: HPV-Related Histologies

Lois Dickie, BA, BS, CTR

Senior Editor, Solid Tumor Rules

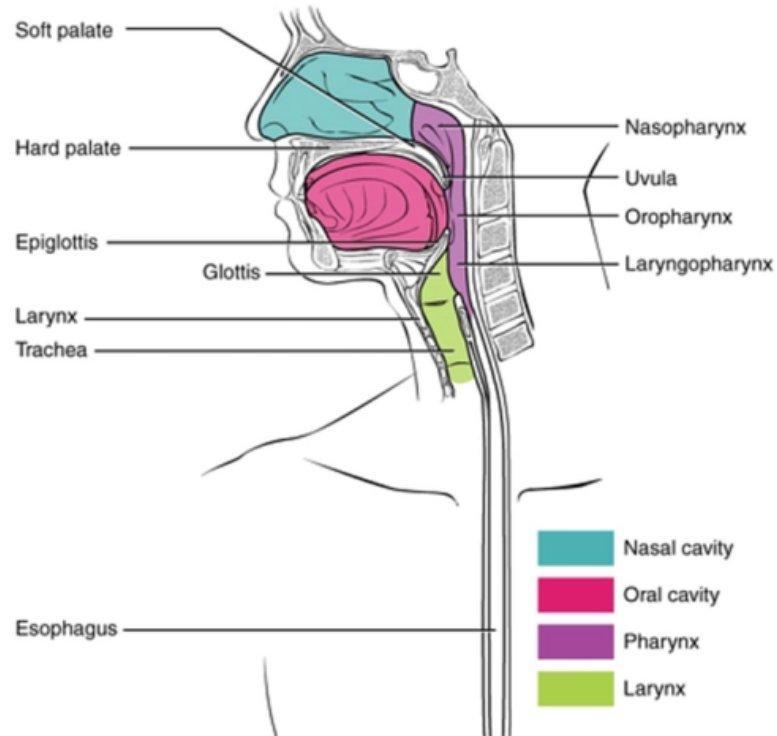
2023 SEER Workshop

December 7, 2023

Agenda



- Head & Neck: General Information
- Oropharynx neoplasms
 - Sites
 - Common histologies
 - Coding HPV-related SCC
- Solid Tumor Histology Instructions: Table 5



Head & Neck
Module covers 71
sites!

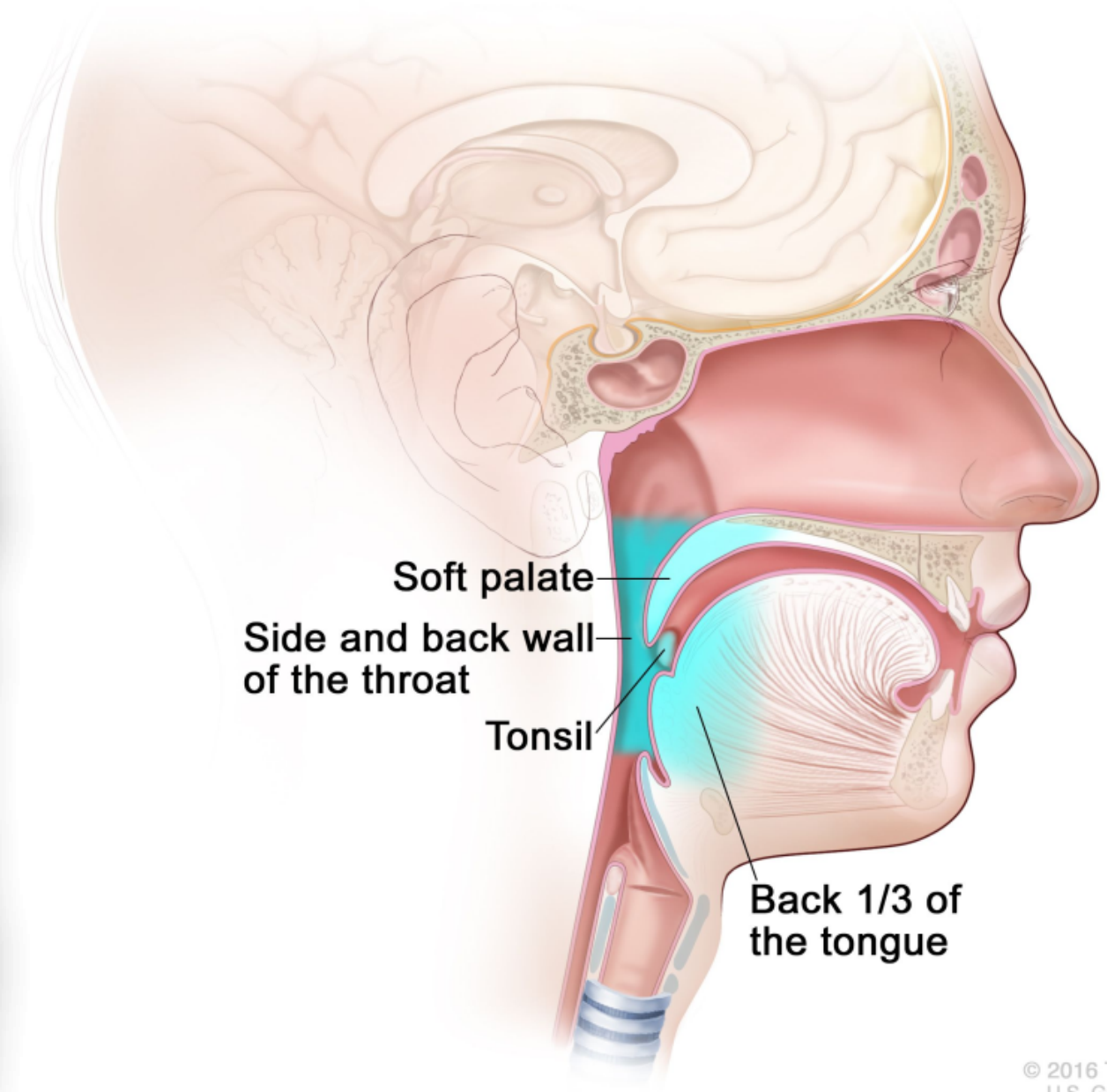
Oropharynx
covers 14 sites
(includes NOS &
overlapping)

General Information



- Primary reference is WHO Head & Neck Classification
- Tables based on WHO H&N chapters
- May not include all possible histologies that occur in that site group
- Growing interest in HPV related neoplasms
- HPV-related SCC histology codes apply to oropharyngeal sites only

Parts of the Oropharynx



- Soft palate
- Side and back wall of the throat
- Tonsil
- Back 1/3 of the tongue

Table 5: Tumors of the Oropharynx, Base of Tongue, Tonsils, Adenoids



TURNING CANCER DATA
INTO DISCOVERY

- **Oropharynx:**
 - **C100** Vallecule
 - **C101** Anterior surface of epiglottis
 - **C102** Lateral wall of oropharynx; lateral wall of nasopharynx
 - **C103** Posterior wall of oropharynx; posterior wall of nasopharynx
 - **C104** Brachial cleft
 - **C108** Overlapping lesion of oropharynx; junctional region of oropharynx
 - **C109** Oropharynx NOS; mesopharynx NOS; fauces NOS. Use this code only when the subsite has not been identified as the origin of the lesion.

Table 5: Tumors of Oropharynx, Base of Tongue, Tonsils, Adenoids



- **C019** Base of tongue
 - **C024** Lingual tonsil
 - **Tonsils:**
 - **C090** Tonsillar fossa
 - **C091** Tonsillar pillar
 - **C098** Overlapping lesion of tonsil
 - **C099** Tonsil NOS
 - **C111** Adenoids/pharyngeal tonsil (does not include posterior wall of nasopharynx)
-

Oropharyngeal Tumors



TURNING CANCER DATA
INTO DISCOVERY

- Anatomic site is rich in lymphoid tissue
- Anatomically unique reticular tonsillar crypt epithelium
- Is a major head & neck site for viral-related carcinogenesis
- Majority of oropharynx malignancies are SCC and almost all SCC subtypes
- High percentage of SCC are driven by high-risk HPV
- Prognostic benefit of HPV + status
- P16 valid test for assigning HPV specific histology codes

HPV Related Terminology



TURNING CANCER DATA
INTO DISCOVERY

- SCC, HPV-positive/SCC, HPV-associated [8085](#)
- SCC, HPV-negative/SCC, HPV independent [8086](#)
- Non-keratinizing SCC, HPV positive [8085](#)
 - Non-keratinizing SCC tumors are HPV positive
- Keratinizing SCC, HPV negative [8086](#)
 - Keratinizing SCC tumors are HPV negative
- Non-keratinizing SCC, NOS [8072](#) (HPV unknown/NS)
- Keratinizing SCC, NOS [8071](#) (HPV unknown/NS)

HPV-Related Terms and Subtype/Variants



TURNING CANCER DATA
INTO DISCOVERY

- Diagnosis may include subtype/variant of SCC plus HPV status
- HPV-positive/associated subtype/variants:
 - Non-keratinizing, papillary, adenosquamous, lymphoepithelial, sarcomatoid/spindle cell, basaloid
- HPV-negative/independent subtype/variants:
 - Keratinizing, verrucous, basaloid, papillary, spindle cell/sarcomatoid, adenosquamous, lymphoepithelial

Coding HPV-Related Subtypes/Variants



TURNING CANCER DATA
INTO DISCOVERY

- Added to the 2024 Solid Tumor Updates:

Cases diagnosed 1/1/2018* forward: When the diagnosis is a subtype/variant of squamous cell carcinoma *and* HPV status is also noted, code the subtype variant.

Example: Basaloid squamous cell carcinoma, HPV-positive.

Code basaloid SCC 8083/3

* You are not required to review previously abstracted cases to determine if a subtype/variant was stated and update histology

CAP Pharynx Protocol



- Histologic Type (carcinomas of the oropharynx and hypopharynx)
 - Oropharyngeal squamous cell carcinoma, HPV-associated (oropharynx only)
 - Oropharyngeal squamous cell carcinoma, HPV-independent (oropharynx only)
 - Oropharyngeal squamous cell carcinoma, HPV status unknown (see “ancillary studies” for additional notes)
 - P16 IHC
 - HPV E6/E7 mRNA ISH
 - HPV-DNA ISH
 - HPV-DNA PCR
 - HPV E6/E7 mRNA RT-PCR
 - EBV Early mRNA (EBER) ISH

CAP Pharynx Protocol



- Squamous Cell Carcinoma Subtypes (required only for carcinomas of the oropharynx and hypopharynx)
 - Squamous cell carcinoma, conventional (keratinizing)
 - Squamous cell carcinoma, nonkeratinizing
 - Adenosquamous carcinoma
 - Basaloid squamous cell carcinoma
 - Papillary squamous cell carcinoma
 - Spindle cell squamous carcinoma
 - Verrucous carcinoma
 - Carcinoma cuniculatum
 - Lymphoepithelial carcinoma (non-nasopharyngeal)
 - Other

Questions

- Submit questions to:
Ask A SEER Registrar
- <https://seer.cancer.gov/registrars/contact.html>



TURNING CANCER DATA
INTO DISCOVERY