



TURNING CANCER DATA
INTO DISCOVERY

2023 SEER Workshop

Advanced Topics for Registry Professionals

December 5 – 7



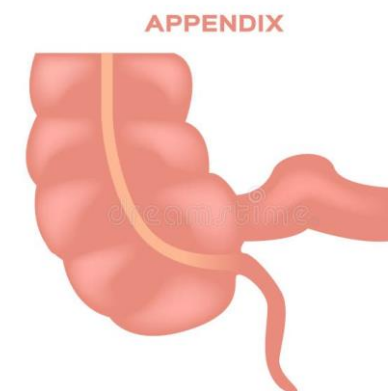
TURNING CANCER DATA
INTO DISCOVERY

LAMN / HAMN

Anatomy for Appendix

Peggy Adamo, NCI SEER

December 6, 2023



Priority Order of Resources for Coding Primary Site for Solid Tumors



1. ICD-O-3

- a. ICD-O-3 Implementation Guidelines <https://www.naaccr.org/icdo3/>

2. SEER Program Manual

<https://seer.cancer.gov/tools/codingmanuals/>

- a. Including Coding Guidelines in Appendix C

3. Solid Tumor Rules <https://seer.cancer.gov/tools/solidtumor/>

Coding Primary Site



- Code primary site to reflect **site of origin** according to medical opinion on the case
- Look for information about where the neoplasm originated
 - Always code primary site based on where the tumor arose / site of origin. Site of origin may be indicated by terms such as "tumor arose from...", "tumor originated in...", or similar statements
- Site of origin is **not necessarily site of biopsy**
- Tumors may involve many sites. The primary site code should reflect **site where tumor arose** rather than all sites of involvement.

LAMN & HAMN

- Low grade appendiceal mucinous neoplasm
- High grade appendiceal mucinous neoplasm

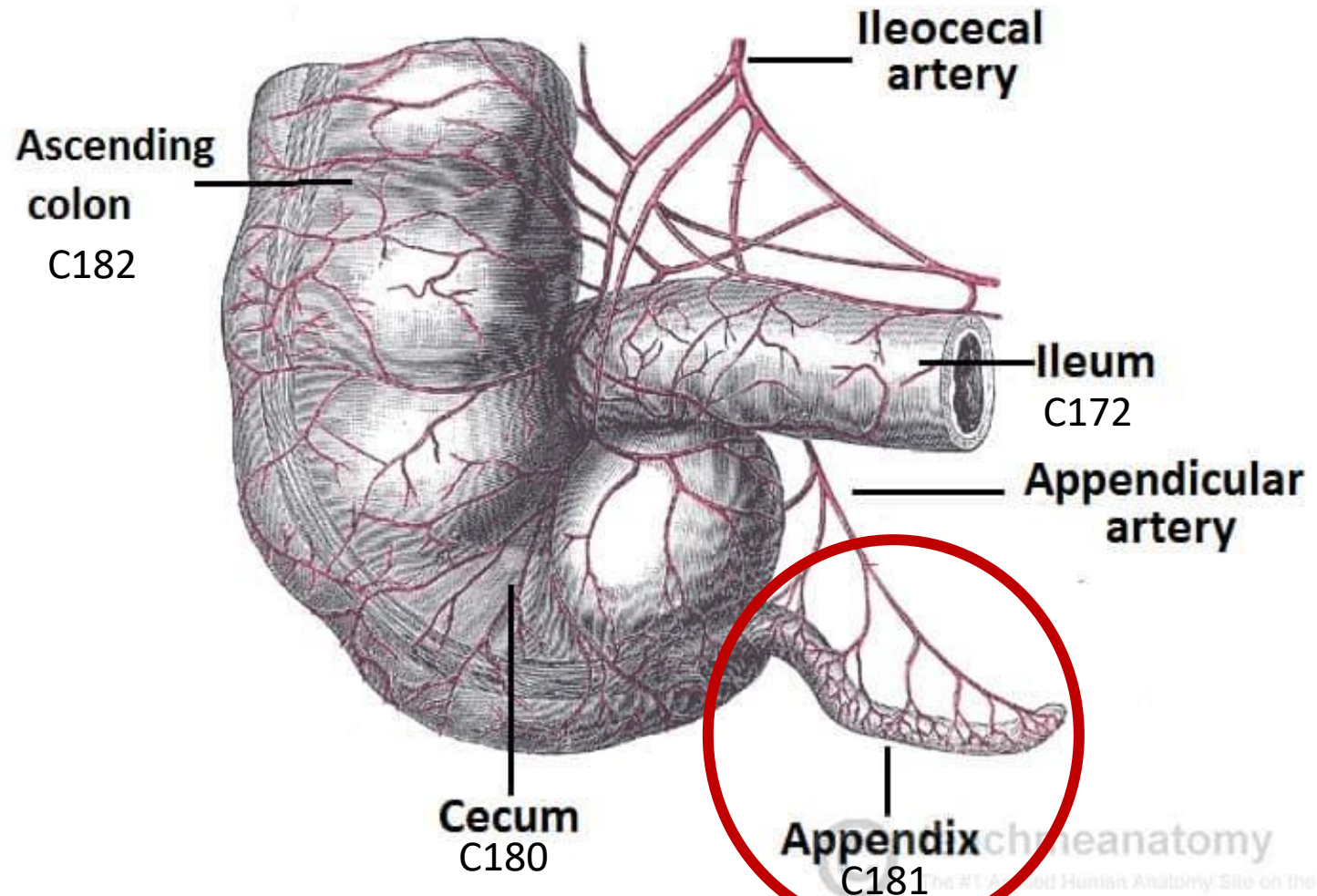


TURNING CANCER DATA
INTO DISCOVERY

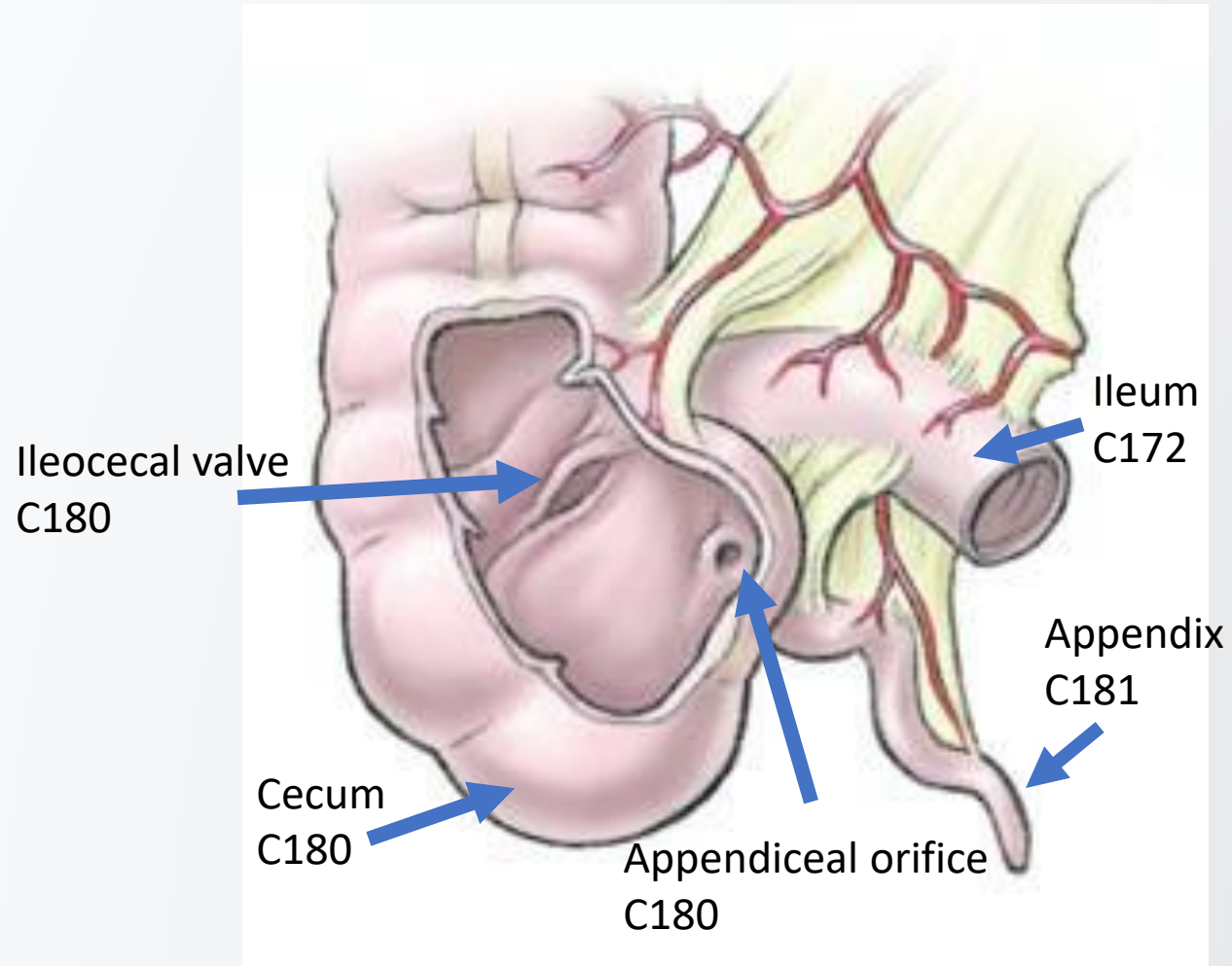
Appendix C181



TURNING CANCER DATA
INTO DISCOVERY

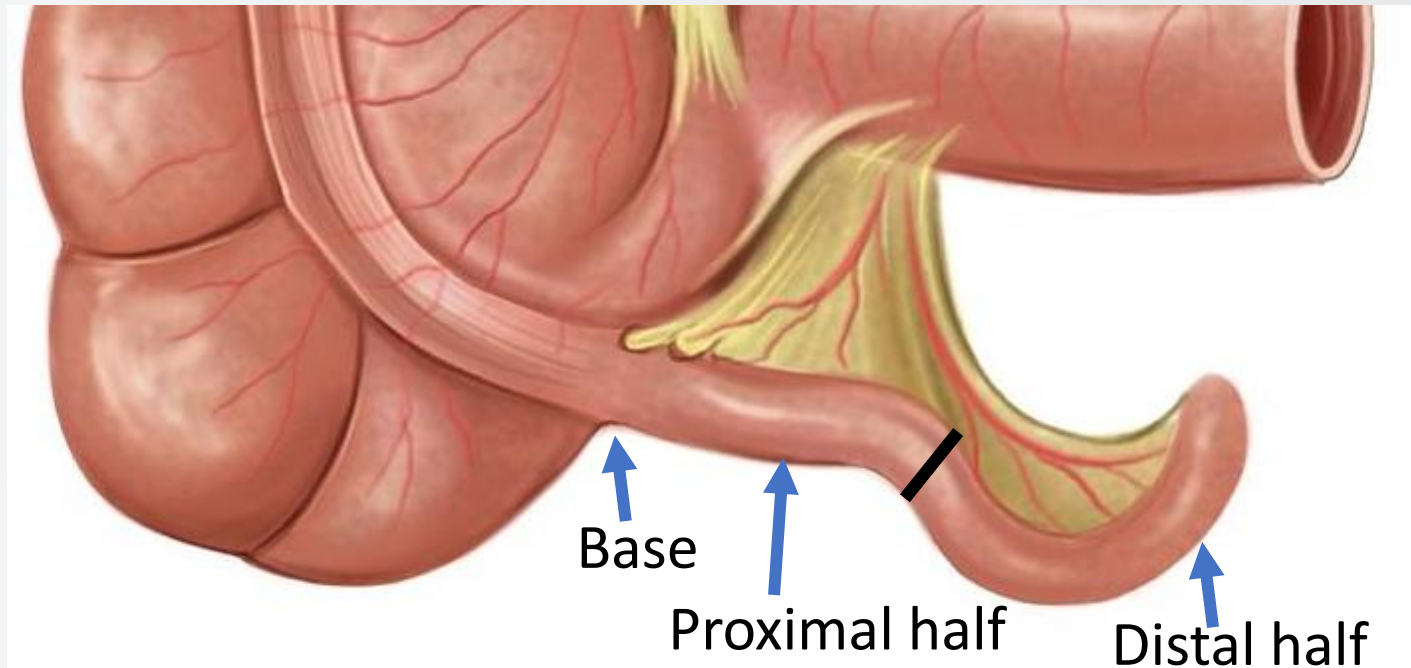


Appendix and Ileocecal Valve



Appendix C181

- Base of appendix
- Proximal half
- Distal half

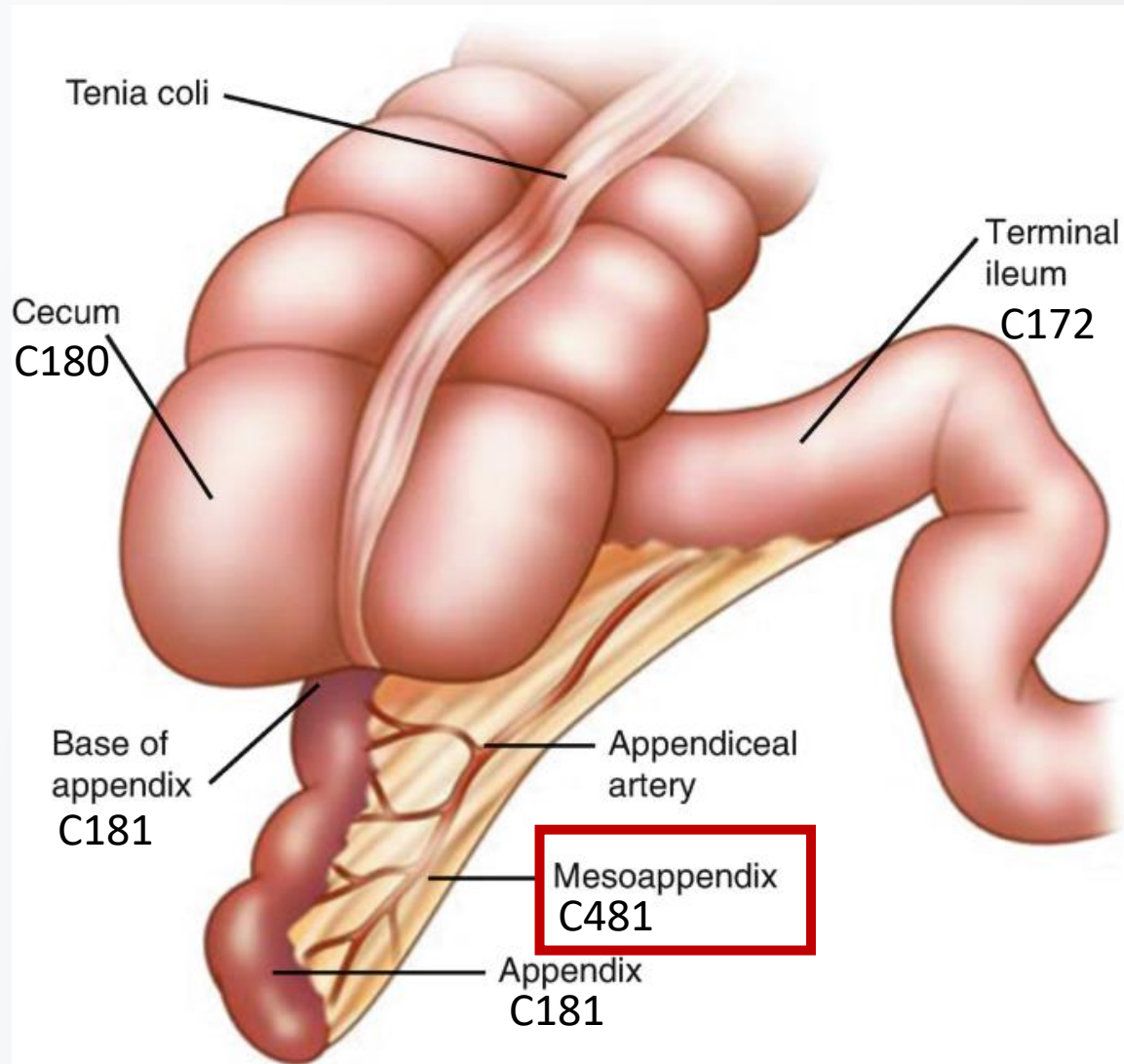


TURNING CANCER DATA
INTO DISCOVERY

Mesoappendix C481



TURNING CANCER DATA
INTO DISCOVERY



Appendix Wall

- Mucosa
- Lamina propria
- Muscularis mucosa
- Submucosa
- Muscularis propria
- Subserosa
- Serosal surface
- Visceral peritoneum
- Peritoneum

Least invasion

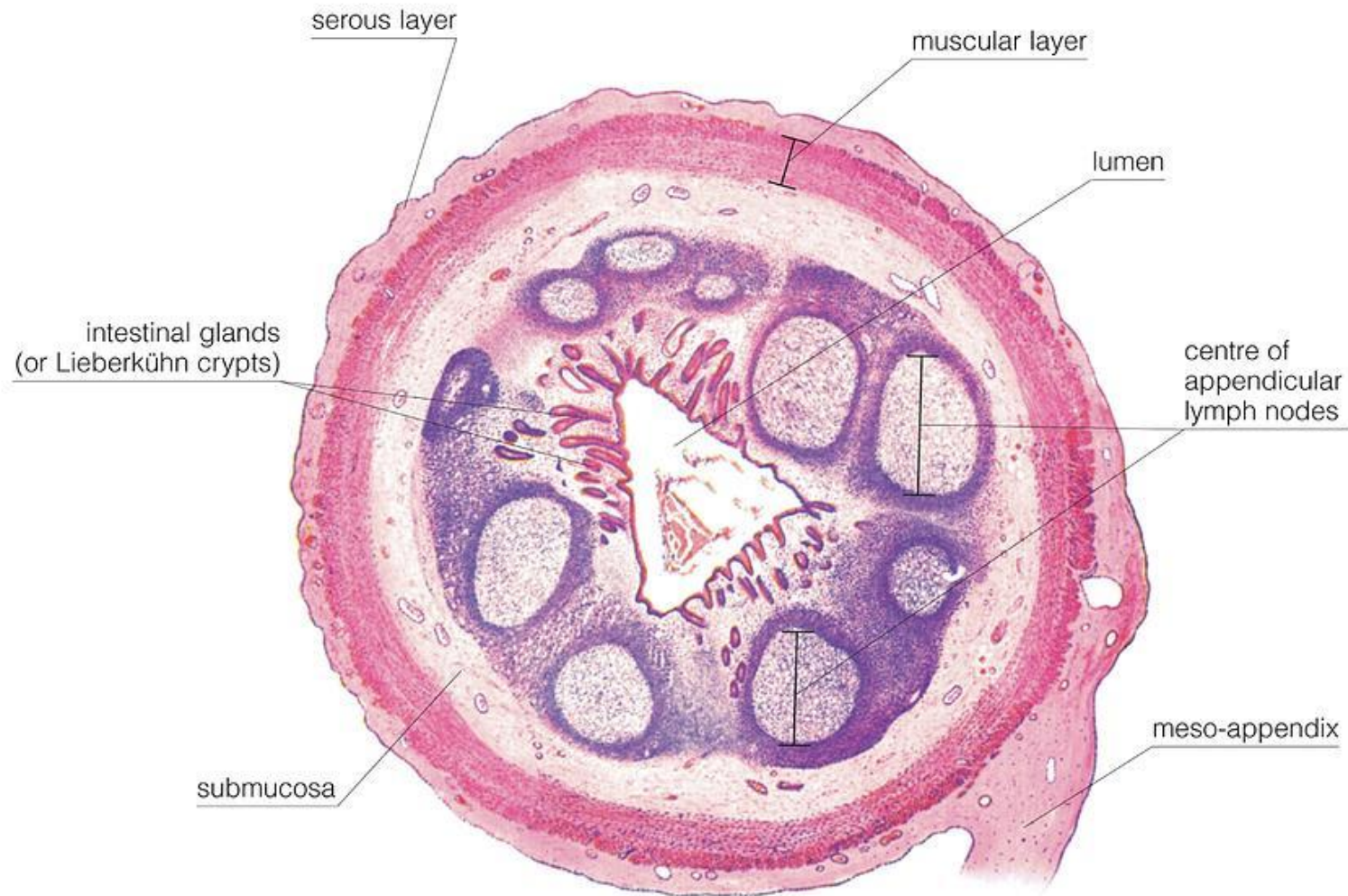


Greatest invasion



TURNING CANCER DATA
INTO DISCOVERY

Appendix C181



TURNING CANCER DATA
INTO DISCOVERY



TURNING CANCER DATA
INTO DISCOVERY

Thank You!



TURNING CANCER DATA
INTO DISCOVERY

Questions?

Peggy Adamo

adamom@mail.nih.gov



APPENDIX CANCER



**TURNING CANCER DATA
INTO DISCOVERY**