



TURNING CANCER DATA  
INTO DISCOVERY

# 2023 SEER Workshop

Advanced Topics for Registry Professionals

---

December 5 – 7



TURNING CANCER DATA  
INTO DISCOVERY

# Extra- and Intrahepatic Bile Ducts, Liver

Anatomy & Primary Site

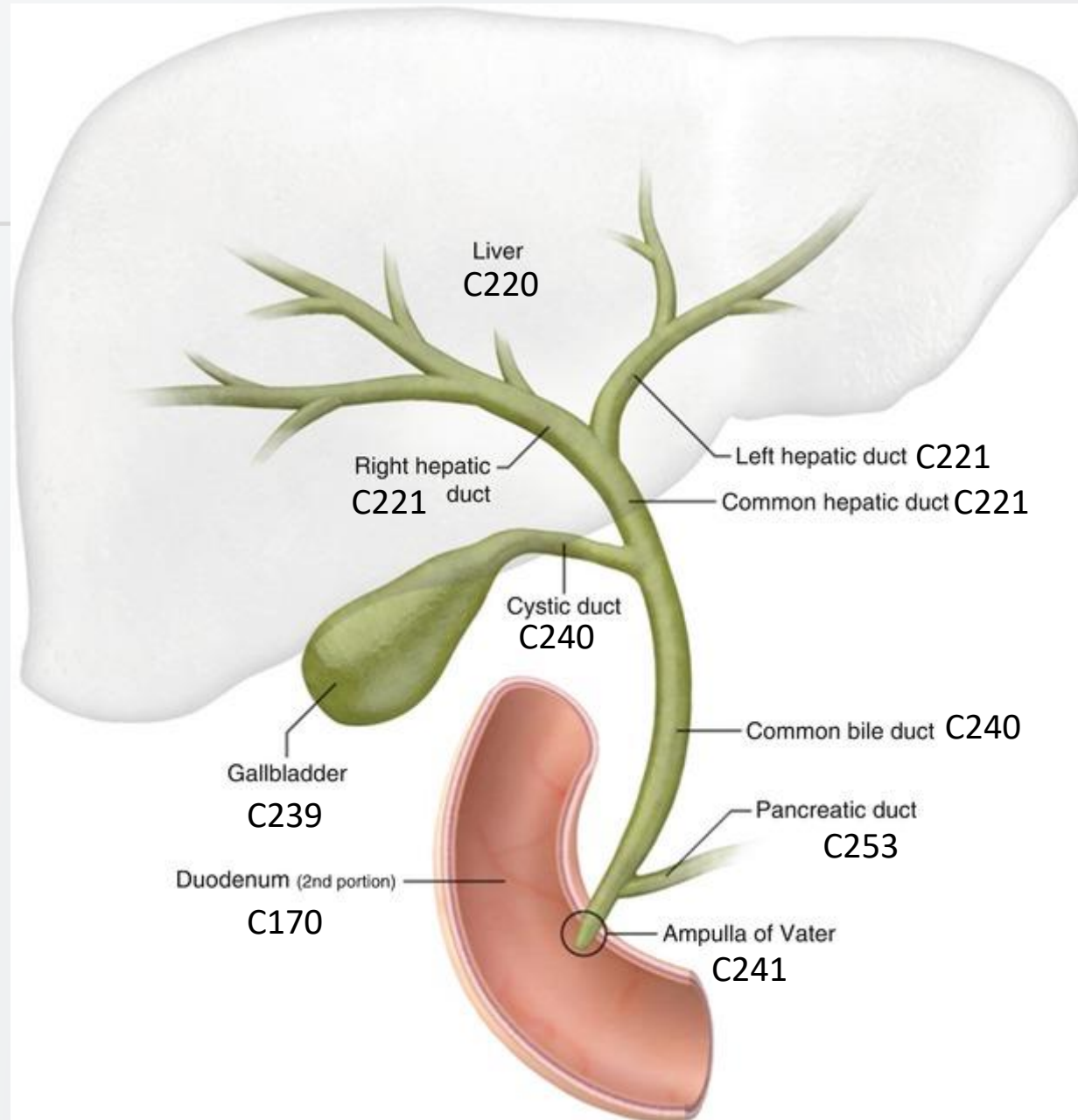
Schema Discriminator

Peggy Adamo, NCI SEER

December 6, 2023



# Liver & Biliary System

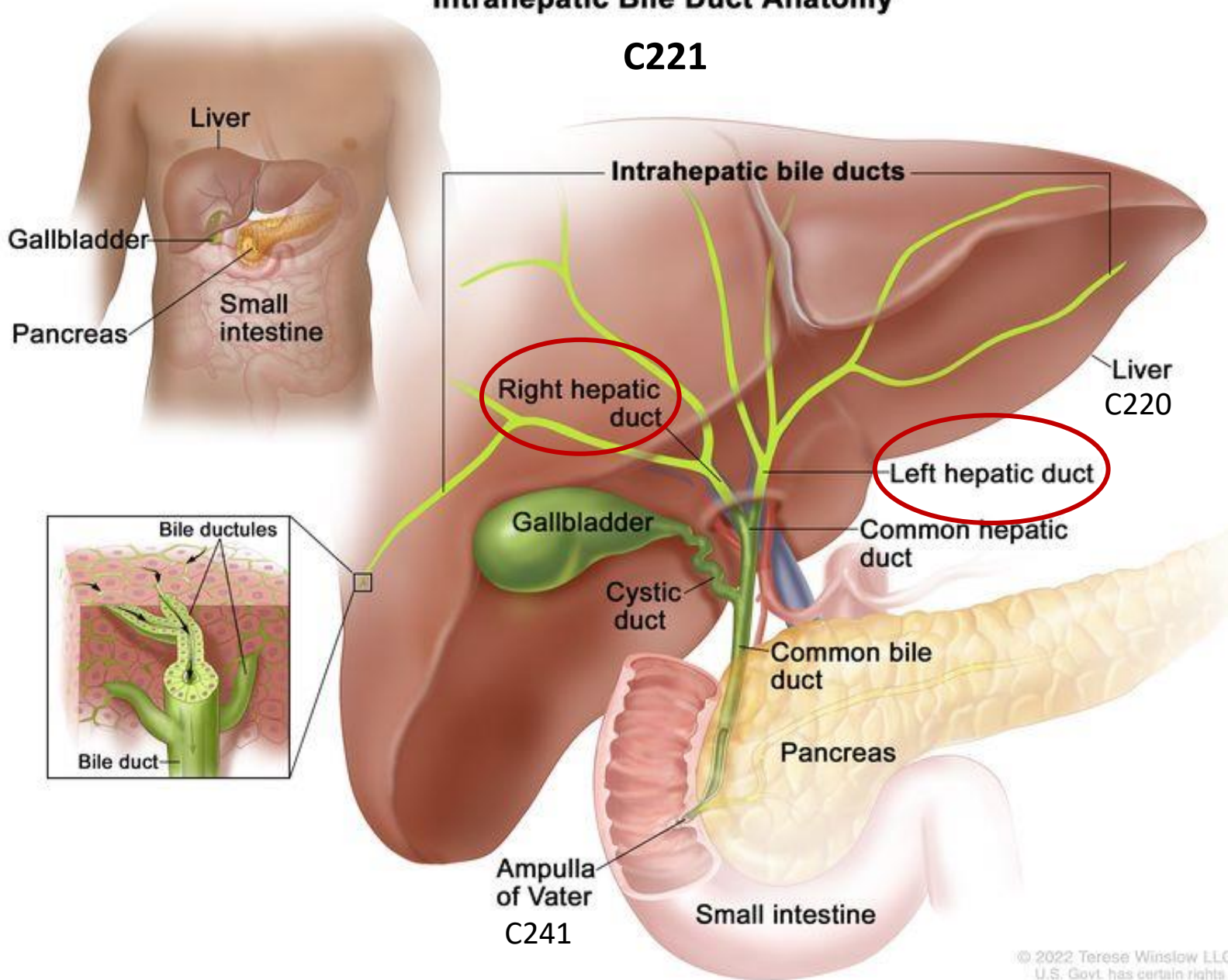


TURNING CANCER DATA  
INTO DISCOVERY



# Intrahepatic Bile Duct Anatomy

C221



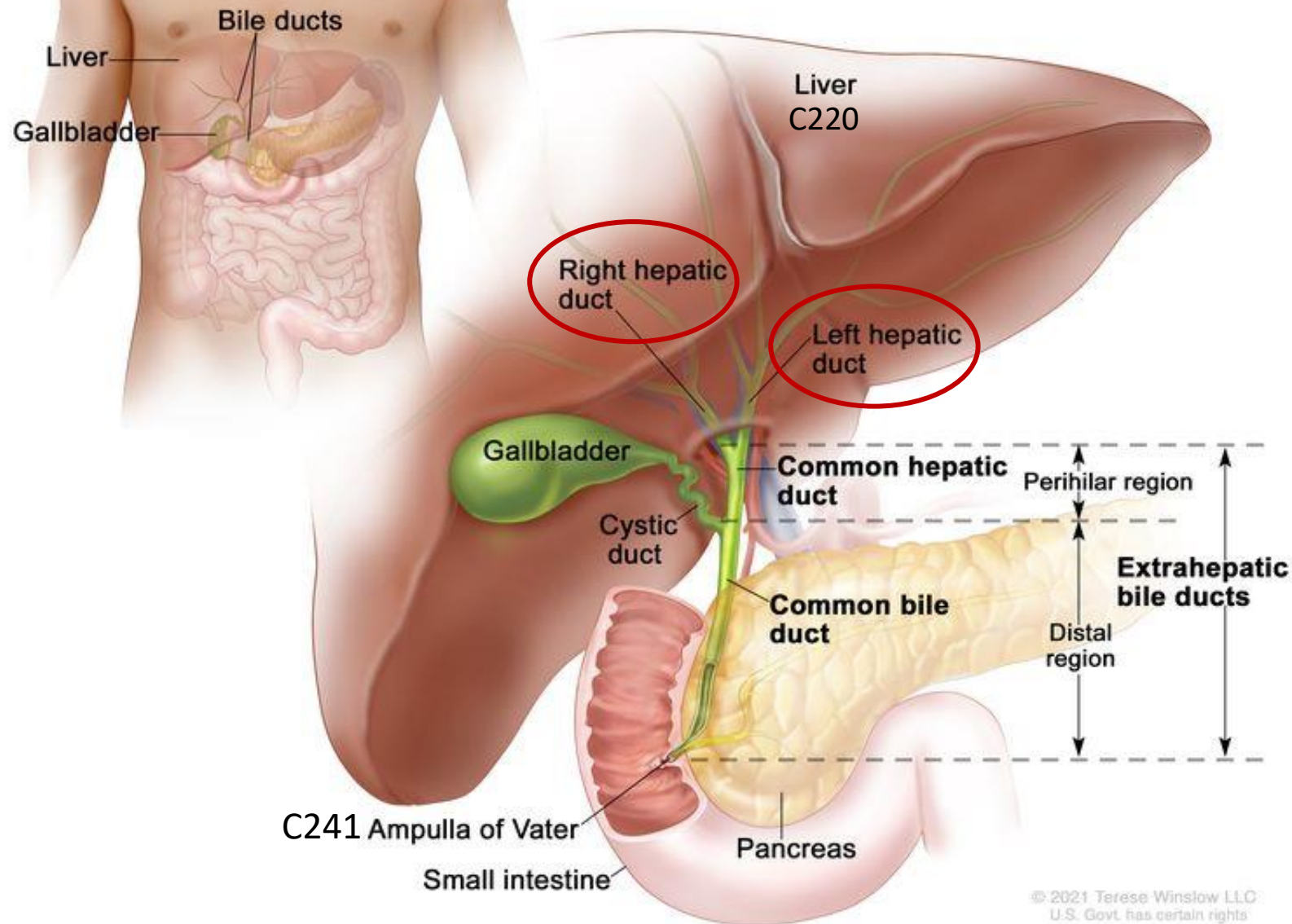
TURNING CANCER DATA INTO DISCOVERY

## C221

### Intrahepatic bile duct

## Extrahepatic Bile Duct Anatomy

C240



TURNING CANCER DATA  
INTO DISCOVERY

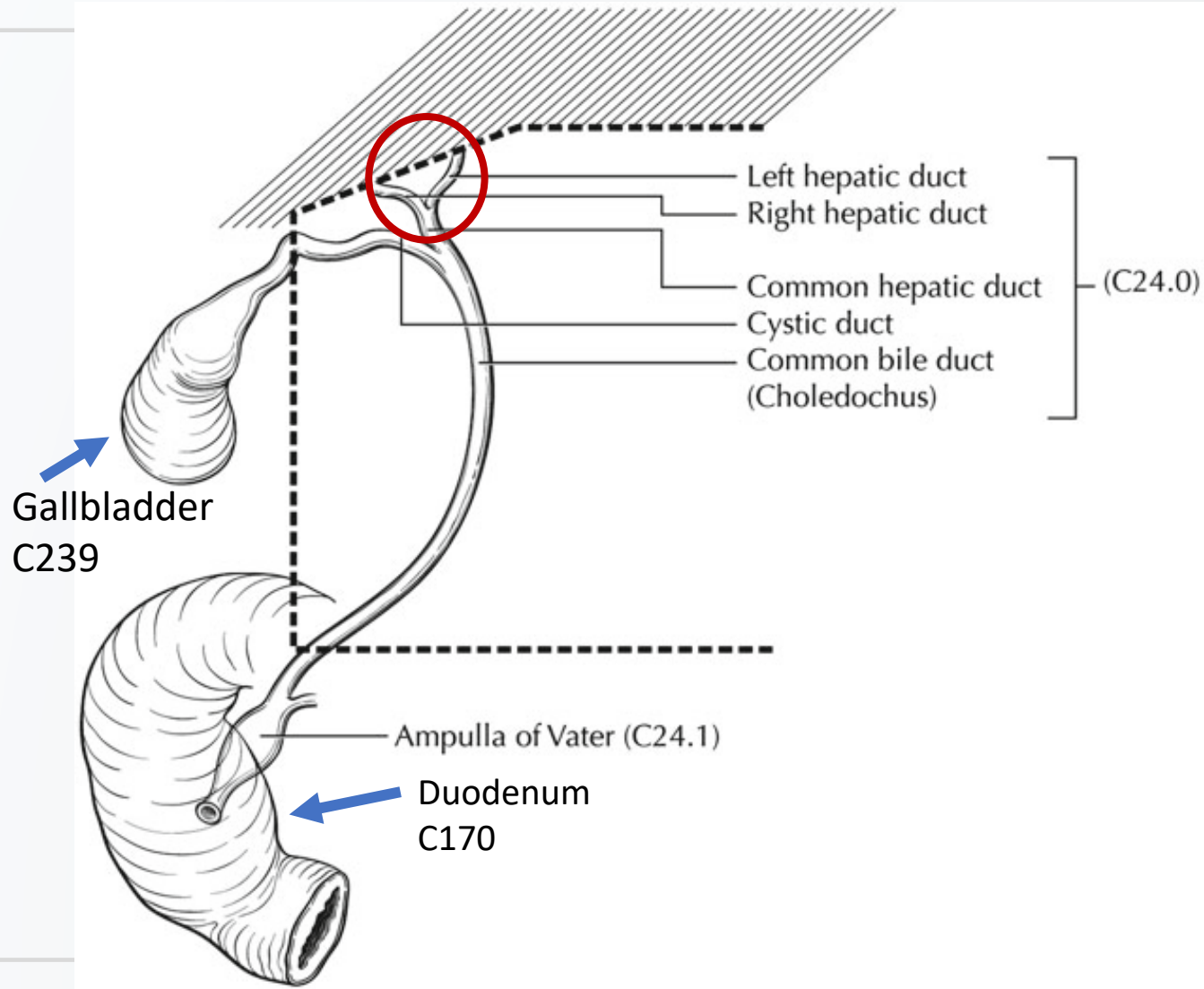
## C240

Bile duct, NOS  
Biliary duct, NOS  
Choledochal duct  
Common bile duct  
Cystic bile duct  
Hepatic bile duct  
Sphincter of Oddi

# Perihilar Bile Ducts C240



TURNING CANCER DATA INTO DISCOVERY



# Schema Discriminator 1 for C240



TURNING CANCER DATA  
INTO DISCOVERY

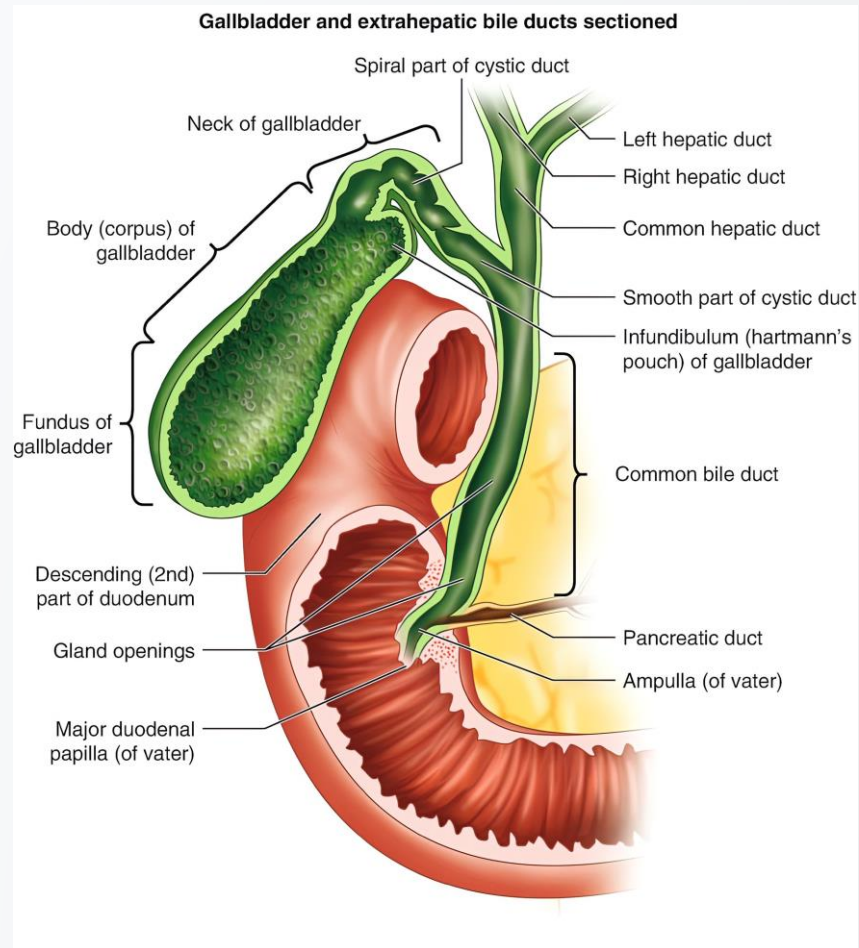
Code	Description	Schema ID #/Description
1	Perihilar bile duct(s) Proximal extrahepatic bile duct(s) Hepatic duct(s)	00250: Bile Ducts Perhilar
3	Cystic bile duct; cystic duct	00242: Cystic Duct
4	Distal bile duct Common bile duct Common duct, NOS	00260: Bile Duct Distal
5	Diffuse involvement More than one subsite involved, subsite of origin not stated	00250: Bile Ducts Perhilar
6	Stated as middle extrahepatic bile duct AND treated with combined hepatic and hilar resection	00250: Bile Ducts Perhilar
7	Stated as middle extrahepatic bile duct AND treated with pancreaticoduodenectomy	00260: Bile Duct Distal
9	Extrahepatic bile ducts, NOS	00250: Bile Ducts Perhilar



# Extrahepatic Bile Ducts C240



TURNING CANCER DATA  
INTO DISCOVERY

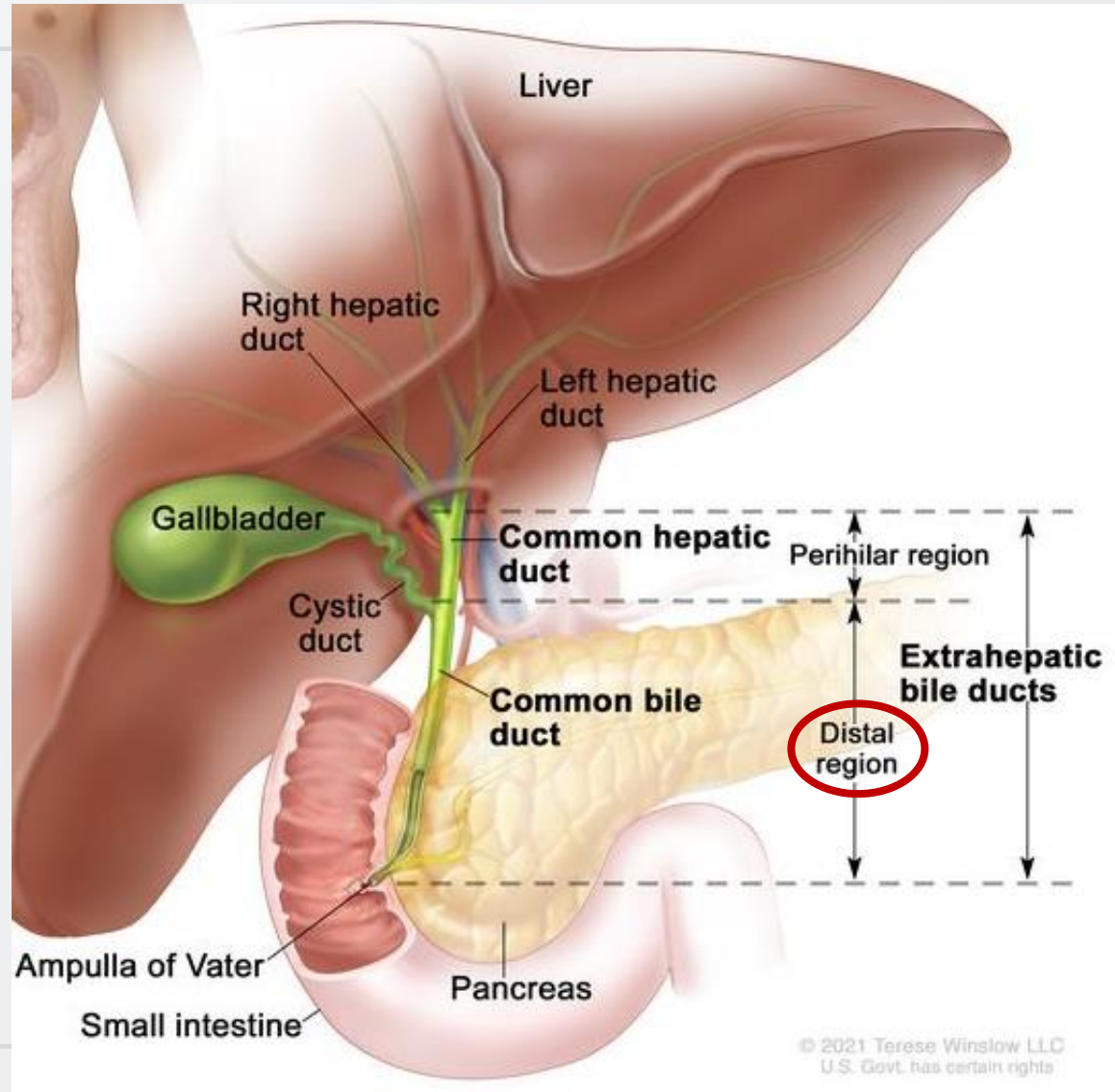




# Distal Bile Ducts C240



TURNING CANCER DATA INTO DISCOVERY



# Primary Site Coding Tips

---



TURNING CANCER DATA  
INTO DISCOVERY

1. “Intrahepatic cholangiocarcinoma” = intrahepatic bile ducts  
C221
2. Mass at distal common bile duct = C240
3. C241 Ampulla of Vater includes both peri-ampullary and  
intra-ampullary
4. “Pancreatobiliary” mass = C269
5. Porta hepatis = C220

Thank You!



TURNING CANCER DATA  
INTO DISCOVERY

Questions?

*Peggy Adamo*

[adamom@mail.nih.gov](mailto:adamom@mail.nih.gov)





**TURNING CANCER DATA  
INTO DISCOVERY**